

Project Name: Deephaven

Location: Deephaven, MN

Category: Residential

Abstract:

Deephaven's modern layout contrasts with its glaciated surroundings, seamlessly merging contemporary design with geological heritage. Water features echo the land's natural formation, while native boulders mimic erosion, and bioswales promote sustainability. Social areas juxtapose architectural lines with the landscape's natural contours, prioritizing habitat preservation and biodiversity. Architectural innovation integrates Deephaven into its environment, harmonizing cultivated and wild elements. Through meticulous design, Deephaven becomes a symbiotic extension of the land, embodying coexistence. The Landscape Architect's vision manifests in a meticulously organized landscape, featuring flexible program and elegant transitions. Consistent materials and plants emphasize form, texture, and color, enhancing the overall aesthetic.

Project Name: Deephaven

Location: Deephaven, MN

Category: Residential

Narrative:

Nestled within the picturesque Minnetonka Lakes region, Deephaven stands as a testament to harmonizing modern design with the rich glacial history of its surroundings. This glaciated landscape was the primary inspiration for the site design from overall concept to ornate details, a narrative of geological resilience and natural elegance emerged. The flow of water over the landscape and through the home itself is a powerful reminder of how water sculpted this land and continues to shape our world. The landscape architect meticulously orchestrated the placement of massive native boulders that were strategically positioned and carefully arranged to echo the site's glacial origins. Much of their mass was concealed beneath the earth to emulate the gradual erosion by water over time, making the boulders appear as though water had eroded the hillside down to them.

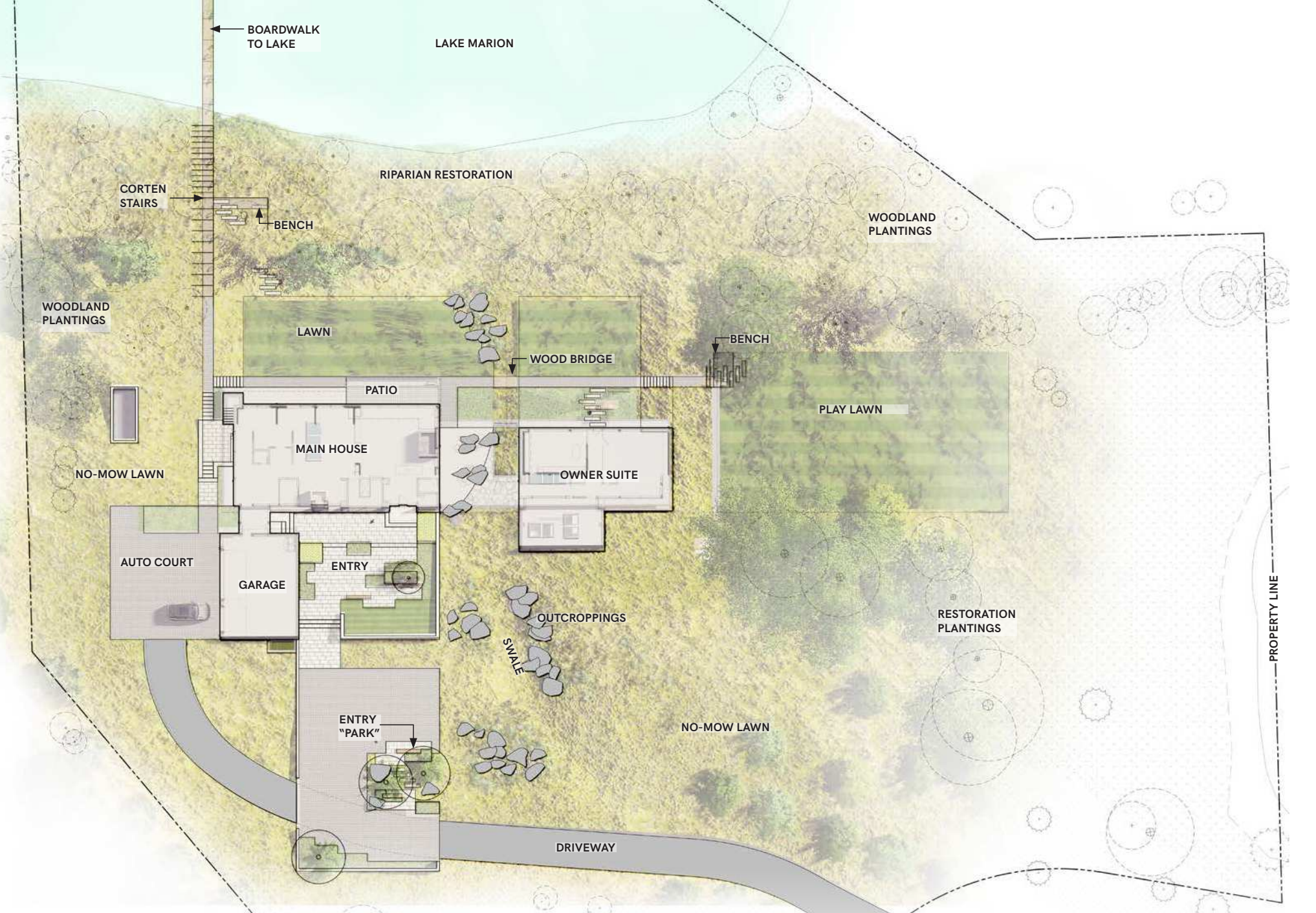
In line with the project's ecological ethos, all water movements within the site traverse through a meticulously designed bioswale, showcasing a commitment to sustainability and environmental stewardship. This holistic approach not only fulfills the client's vision of seamlessly integrating the natural landscape into the home but also underscores a conscientious effort towards preserving and enhancing the site's ecological integrity.

Beyond its ecological significance, Deephaven embodies a sanctuary for family activities and social gatherings. Expansive lake vistas, textured gardens, lawn terraces, artful seating all carefully curated to beckon guests to immerse themselves in the tranquil beauty of the surroundings. The more formal gathering spaces and gardens are focused near the home itself, allowing a strong contrast between the rigid lines of house and outdoor program which show up as shifting datums in a landscape of natural, rolling topography. All of the spaces are highly intentional to create an exaggerated and distinct modern counterpoint of strict lines and shifting datums against rolling hills and soft nature. The client's vision for the landscape prioritized fostering habitat and welcoming local wildlife onto the property. The complex ecosystem of wetland and remnant oak savannah were amended and enhanced to improve water quality, biodiversity and contribute to the wildlife patch dynamics within

this landscape. Intensive native plantings are thoughtfully incorporated and transition to the more subtle and wild native fescue grasses that dominate the landscape beyond. Moreover, the restoration of the wetland edge and the diverse array of species inhabiting the bioswale underscore the project's commitment to biodiversity and habitat conservation. By augmenting the native wetland seed mix along the lake edge, Deephaven not only enhances water quality but also fosters a thriving ecosystem that contributes to the intricate web of wildlife dynamics within the landscape.

The architectural language of Deephaven speaks of bold innovation and deliberate contrast. The deliberate design choices anchor the home firmly within its surroundings, eschewing any attempt to replicate the neighboring hills. Instead, the architecture boldly asserts its distinctiveness, drawing attention to its unique presence within the landscape. Crisp transitions between manicured surfaces and natural terrain, alongside consistent material choices, delineate a landscape that is both strikingly contemporary and inextricably linked to its natural heritage. Multi-tiered landscapes seamlessly blur the boundaries between the cultivated and the wild, establishing a captivating dialogue between human intervention and organic growth.

Crisp transitions between manicured surfaces and natural terrain, alongside consistent material choices, delineate a landscape that is both strikingly contemporary and inextricably linked to its natural heritage. Through meticulously layered gardens, captivating seating areas, and turf panels, an engaging visual juxtaposition is created against the backdrop of the native oak savanna and wetland ecosystems. Multi-tiered landscapes seamlessly blur the boundaries between the cultivated and the wild, establishing a captivating dialogue between human intervention and organic growth. Driven by a desire to coexist harmoniously with nature, Deephaven's design narrative unfolds as a series of carefully curated "rooms," each tailored to accommodate specific programmatic needs while preserving the site's intrinsic beauty and ecological balance. As the landscape reveals itself through a choreography of lines and contours, Deephaven emerges not as an imposition upon its environment but as a symbiotic extension of the land—a timeless testament to our place within nature.



Site Plan:

In concert with the home's structure, the site was designed as a series of landscape "rooms" flatly benched in contrast to the natural topography. The interstitial areas were shaped to blur the lines between old and new, making it feel as if nature flows through the project.



Design+Build:

The Landscape Architect not only designed the site, but also installed the entire landscape. Visualizations were a critical tool for both client and construction communication. Elements such as the boulder layout were directly translated from the 3D model and the design team worked in the field on quirky details.



Detail:

A landscape of vibrant intersections. A consistent palette of materials overlap throughout the site: corten edges, oak slabs, limestone pavers, erratic boulders, and textures of green.



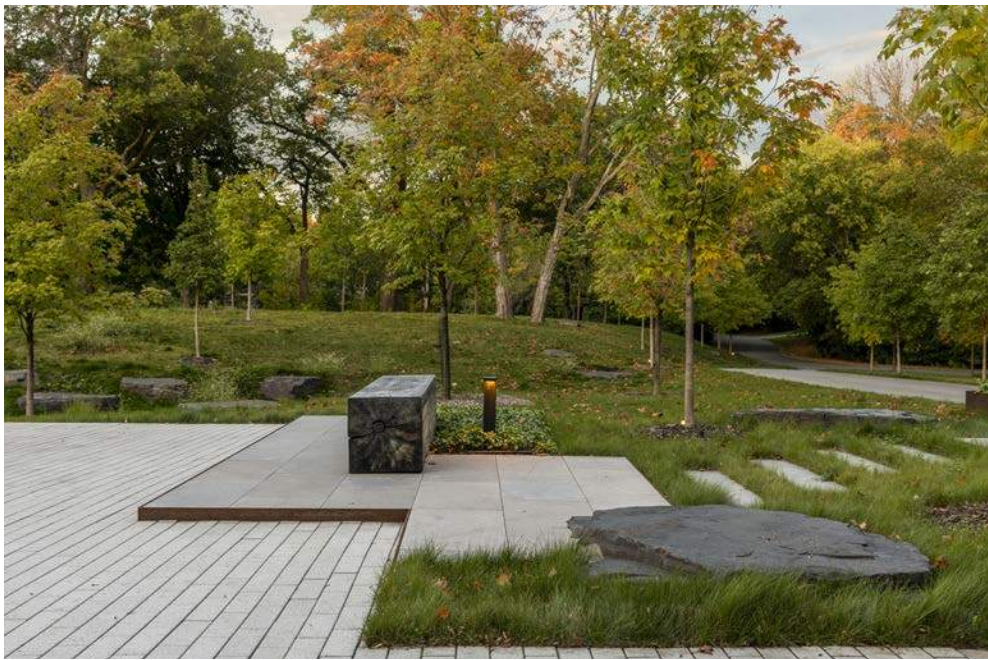
Glacial Erratics:

The landscape architect meticulously arranged massive native boulders to honor the site's glacial past, an integral aspect of the design narrative. Each placement was deliberate, with a majority of the boulders' mass buried to simulate the gradual erosion by water on its journey to the lake, enhancing the naturalistic ambiance.



Entry Park:

The first in a series of follies, the entry park eats into the hardscape of the autocourt and introduces the design theme of flatness and datums. This contrast accentuates the rolling hills of the natural context.



Composed Transitions:

Cutting crisp transitions between manicured and natural surfaces, the composition of elements reveal themselves differently from various angles.



Native Grasses:

The Landscape Architect worked with the client to minimize turf grass and drape the site with a blanket of native vegetation. This sea of green textures - including Pennsylvania Sedge, Blue Grama, and Prairie Dropseed - gathers and cleanses the site's water as it moves towards the lake.



Corten Stair:

Using wood cobbles and Corten steel, the design subtly integrates into the hillside, following its contours. Carefully positioned features reveal the site's natural character, defining garden beds and lawns. These elements add structure to the landscape, accentuating its natural charm while providing clarity within the undulating terrain.



Invitation:
The allure of the lake beckons, drawing inhabitants to explore artfully crafted spaces that offer diverse experiences of the site. From tranquil shorelines to secluded viewpoints, each area entices occupants to engage with nature in unique ways, fostering a deeper connection with the surrounding landscape.



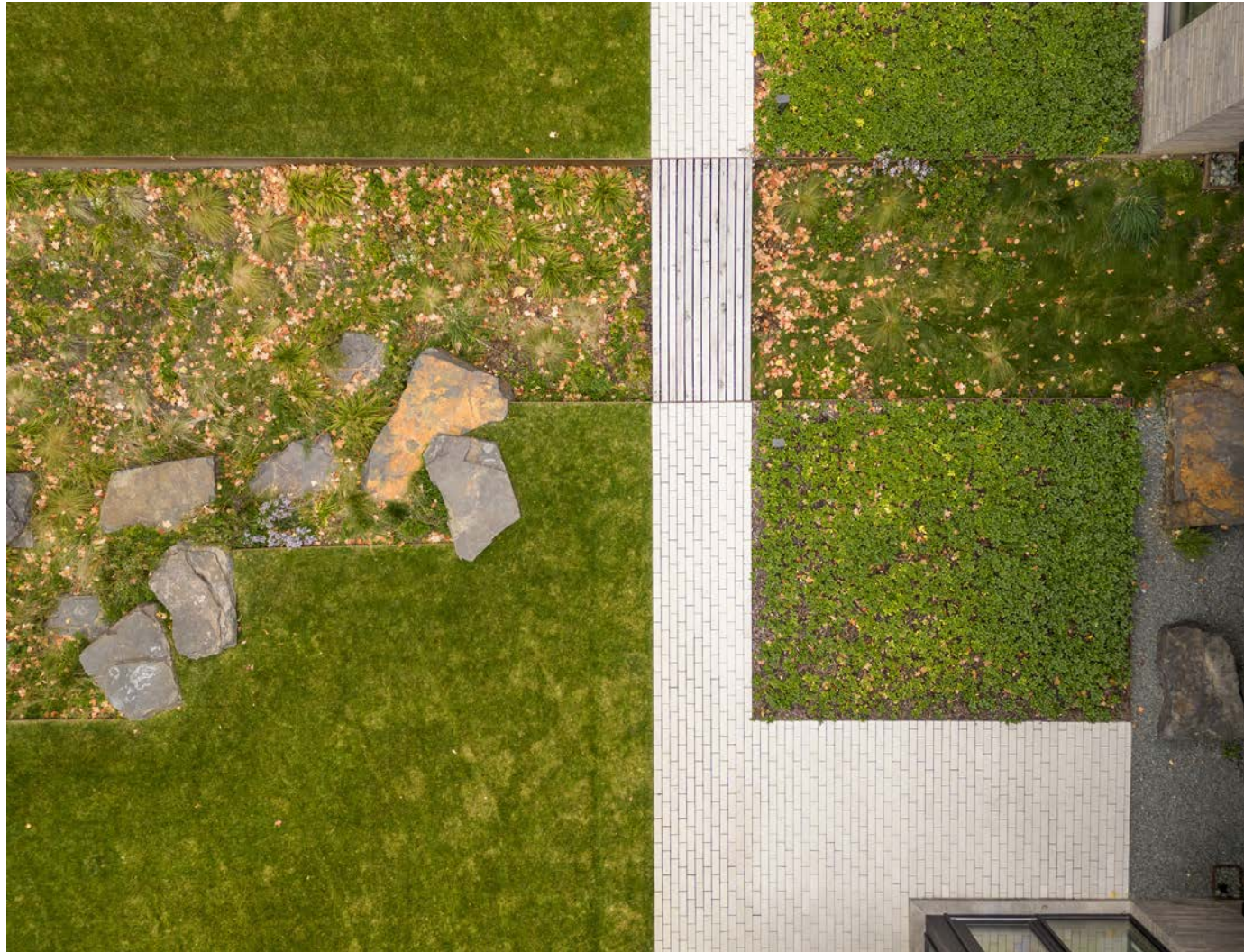
Context and Contrast:

Interconnected spaces provide a variety of scales for family-use. The crisply mown lawn-panel intersects the restored wetland buffer. Where formality meets the wild and native meets the organized.



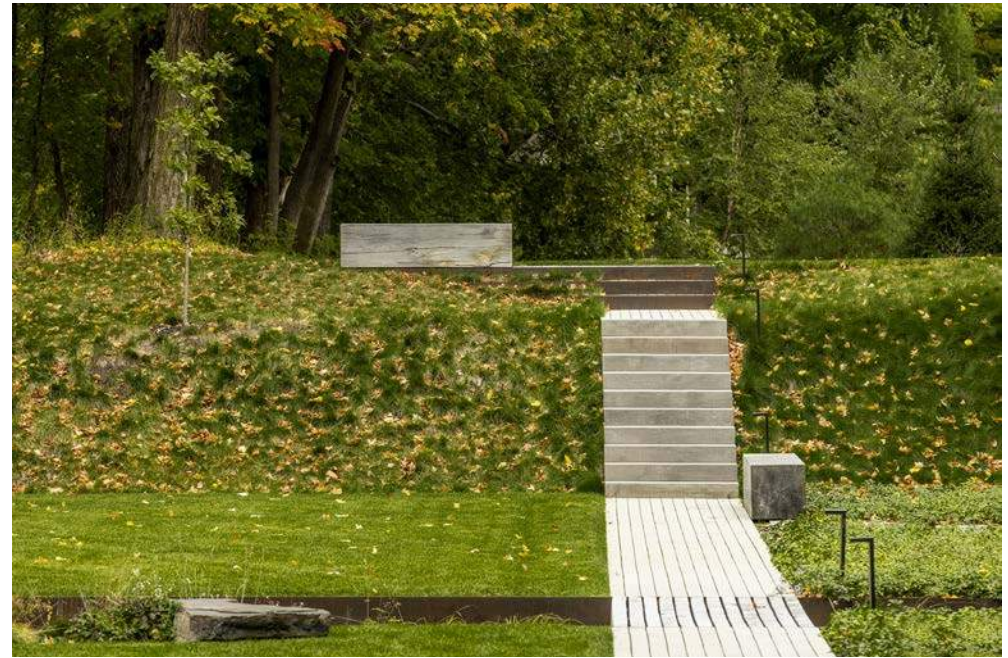
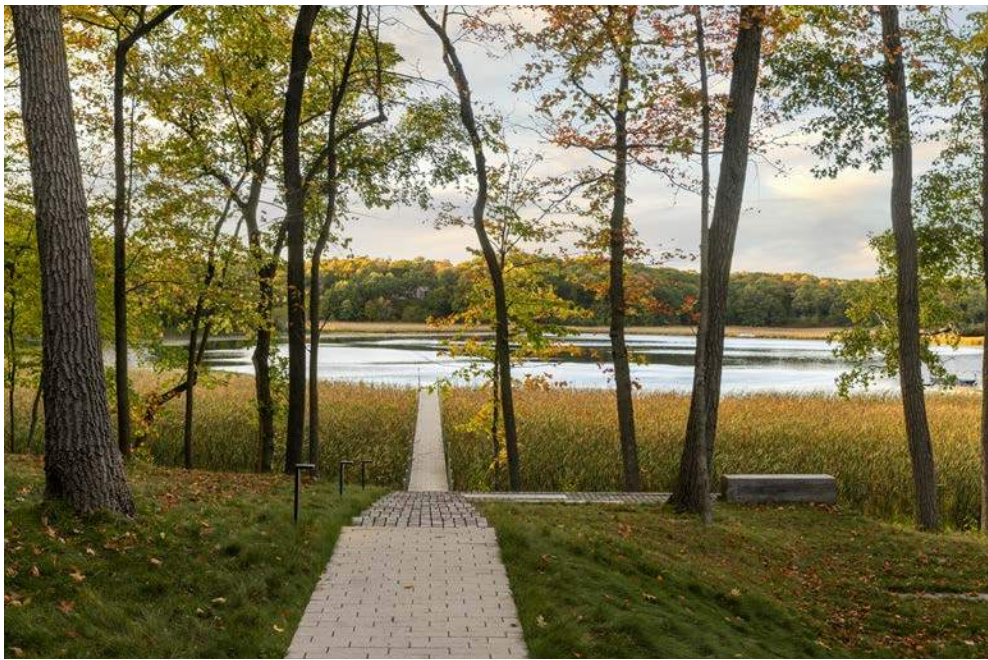
Gradients:

Water meanders directly through the home in a bioswale that subtly aligns with the architecture and leads both water and attention to the lake. From tranquil shorelines to secluded viewpoints, each area entices occupants to engage with nature in unique ways, fostering a deeper connection with the surrounding landscape.



Footbridge:

Crafted from White Oak, the minimalist bridge echoes the materiality of the benches, creating a cohesive design language. This simple yet deliberate choice unifies the space, enhancing its aesthetic appeal while maintaining a sense of tranquility.



Connections:

Dramatic lines in every cardinal direction draw the visitor through the landscape, captivating them with vistas that unfold to the east, west, north, and south. Each perspective offers a unique tableau, enticing exploration and enriching the experience of the surrounding environment from all angles.



Family Focused Program:

The meticulously laid lawn panels feature an extensive drainage network, ensuring a flawlessly flat surface—a rare sight in a natural landscape that starkly contrasts with the topography. This crisp precision adds an intriguing element to the landscape, offering a distinctive visual contrast and enhancing the overall aesthetic appeal.



Water - Borrowed View:

Central to the project is the site's connection to the lake. The lush turf panel creates a bold contrast and stunning vista. Framed by plantings and a low corten wall, the design elements seamlessly blend, opening toward the lake and blurring the boundary between the site and nature.