

SYMPOSIUM SCHEDULE

7:30-8:00 | SPONSOR & VENDOR SETUP

8:00-8:30 | BREAKFAST (INCLUDED)

8:30-9:30 | SESSION 1

Where'd I Go Wrong? Top Ethics Issues for MN Design Professionals

(1 PDH in Professional Ethics)

Kristine Kubes, Principal, Mediator
Kubes Law Office

9:45-10:45 | SESSION 2

Parks & Parkways- Supporting the Evolution of Suburban Shopping Malls

Chuck Evens, Associate Principal
Damon Farber
Joan MacLeod, Retired Principal
Damon Farber
Loren Gordon, City Planner
City of Minnetonka

11:00-12:00 | SESSION 3

Public Practice: Unfiltered

Carrie Christensen, Sr. Planner
MPRB
Lil Leatham, Principal Planner
Dakota County
Nissa Tupper, Transportation & Public Health
Planning Director
MNDOT

12:00-1:00 | LUNCH (INCLUDED)

1:00-2:00 | SESSION 4

Trauma Informed Placehealing

Teri Kwant, Founder & Lead
DreamLab

2:15-3:15 | SESSION 5

Green Infrastructure to Expand the Public Realm:

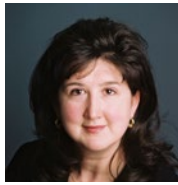
Nathan Campeau, Water Resources Engineer &
Principal Barr Engineering
Marcy Bean, Sr. Landscape Architect
Barr Engineering

3:30-4:30 | KEYNOTE ADDRESS

Making, Keeping, Sharing- Mission Driven Firm

Gina Ford, Co-Founder & Principal
Agency
Landscape & Planning

4:30-5:00 | WRAP UP



SESSION 1

Where'd I Go Wrong? Top Ethics Issues for MN Design Professionals

Attorney Kristine A. Kubes is principal of Kubes Law Office, PLLC, serving design and construction professionals through all stages of a project – from contracts to payment issues, liens, risk management, defense of professional liability claims, and representation of professionals before their respective licensing Boards. She is a litigator licensed to practice before the U.S. Supreme Court, a mediator, and an educator on construction, design, and ethics issues. Kristine is Past National Chair of the American Bar Association Forum on Construction Law. She served as a public member on the MN Board of AELSLAGID from 2006-2013, during which she served two terms as Board Chair from 2009-2011. Daughter of a carpenter and a teacher, Kristine uses the lessons they taught her every day.

SESSION 2

Parks & Parkways- Supporting the Evolution of Suburban Shopping Malls



Chuck Evens



Joan MacLeod



Loren Gordon

Chuck Evens is an Associate Principal at Damon Farber. Throughout his nearly 25 years of practicing, he has sought a balance of vision and practicality in his work. He has cultivated a strong understanding of construction modalities and enthusiastically embraces the implementation phase as a collaboration between the client, contractor, & design team. Most recently, Chuck's work with the City of Minnetonka has led to the design and development of a new city park, Ridgedale Commons. An award-winning project, the new park has spurred economic development and expanded housing within the community.

Joan MacLeod is a retired Landscape Architect and former Principal at Damon Farber. As Founder of Women in Landscape Architecture (WxLA) – Joan was a beloved mentor to many women in the profession and a strong supporter of discussion and exchange of ideas.

Joan practiced landscape architecture in the Twin Cities for over 25 years and won numerous design awards for a variety of projects that recognized her design talents

and leadership. Her work emphasized a collaborative process - integrating natural systems into highly designed environments. Joan's professional and personal experience in community arts, site and urban design, and cultural institutions resulted in a commitment to building strong, sustainable communities.

Loren Gordon, AICP, has served as the Minnetonka City Planner since 2008. In his role he oversees development review, zoning code administration, planning studies, sustainability efforts and preparation and implementation of the comprehensive plan. Sustainable placemaking is at the top of his interests in Minnetonka. Prior to Minnetonka, he served as the Wayzata City Planner, as a planning consultant with Hoisington Koepler Group, and Woolpert in Dayton, Ohio. Loren started his career as a planner with city of Ankeny, Iowa. He is a graduate in Community and Regional Planning from the College of Design at Iowa State University. He is a member of the American Institute of Certified Planners and is a trained Mediator.

SESSION 3

Public Practice: Unfiltered



Carrie Christensen



Lillian Leatham



Nissa Tupper

Carrie Christensen's work in design, planning, education, and community engagement falls at the intersection of equity and the environment. Her cross-sector work combines facilitation, design thinking, community organizing, project management, data analysis, planning and environmental design processes. Carrie is a published author, adjunct faculty at the University of Minnesota, 2001 Fulbright Scholar, 2010 Creative Community Leadership Institute Fellow, 2019 Herberger Institute Practices for Change Fellow, and has consulted with communities across the country around strategic planning, creative community engagement, and resilient design. Carrie is an owner of Landbridge Ecological and a Senior Planner at the Minneapolis Park & Recreation Board where she works on park policy, design, and community engagement. Born in Switzerland and raised in California, Carrie considers Minnesota one of many homes and currently lives in the Twin Cities with her husband and two kids.

Lil Leatham is a planner and registered landscape architect with nearly 25 years of experience helping communities across Minnesota with parks, trails and bikeways, and greenway planning. Her career has focused on helping people connect with the outdoors. She spent 16 years in the private sector before joining the Dakota County Office of Planning. Her work at Dakota County includes park planning, improving active living opportunities, and increasing healthy food access.

Nissa Tupper is the transportation and public health planning director at the Minnesota Department of Transportation. She works with partners to embed public health and equity practices into state transportation decision-making, which includes leading the agency's Complete Streets policy implementation. Her approach is informed by a diverse professional background in communications, landscape architecture, and public health.



SESSION 4

Trauma Informed Placehealing

As an accomplished experience designer, researcher, and public artist, **Teri Kwant** founded and leads DreamLab, a human-centered experience design collaborative. She has led research and created experiences for a broad range of clients, ranging from health-care to corporate to community-based experiences, all from an experiential, functional, and multi-sensory point of view. Her holistic perspective brings end users' and stakeholders' perspectives into the conversation and into sharp focus with an intent to design connections and conversations that lead to more inclusive experiences. Kwant has designed public engagement at the scale of cities to inform urban design and has created placemaking and public art projects at the intimate scale of human interaction.

SESSION 5

Green Infrastructure to Expand the Public Realm



Nathan Campeau



Marcy Bean

Nathan Campeau is a Water Resources Engineer and principal with Barr Engineering Co. spending the last 20 years working on a variety of water resources projects focusing on the modeling and design of low impact development and green infrastructure practices in the urban environment. Nathan helps clients plan and design restorative projects in urban and brownfield spaces, helping to transform and create new public spaces that celebrate water and create meaningful recreation and habitat within critical water quality infrastructure.

Marcy Bean is a senior landscape architect with Barr Engineering and has over 20 years of experience in landscape architecture planning and design, with an emphasis on green infrastructure in urban environments alongside native landscape design and maintenance. Passionate about integrating green infrastructure into public spaces, Marcy's work ranges from master planning and stakeholder facilitation to placemaking and park design, all through a natural resources lens.



KEYNOTE ADDRESS

Making, Keeping, Sharing- Mission Driving Firm

Gina Ford is a landscape architect, co-founder and principal of Agency Landscape + Planning. Underpinning her two decades of practice are a commitment to the design and planning of public places and the perpetuation of the value of landscape architecture via thought leadership, teaching, writing and lecturing. Her work has received awards from the American Society of Landscape Architects, the American Planning Association and the American Institute of Architects, among others. She is a co-founder of the gender justice non-profit WxLA and on the board of directors for the Cultural Landscape Foundation and the City Parks Alliance. Gina is the recipient of the Harvard Graduate School of Design's Charles Eliot Traveling Fellowship, the Wellesley College's Shaw Fellowship and the Boston Society of Architect's Women in Design Award of Excellence.

THANK YOU!

ASLA Minnesota would like to thank the following platinum and gold sponsors for their continued support of ASLA Minnesota and this empowering event:

Bachman's Wholesale Nursery & Hardscape, Maglin Site Furniture Inc, Landscape Forms, Plaisted Companies, Bartlett Tree Experts, Midwest Playscapes, Flagship Recreation, JTH Lighting Alliance, and DeepRoot Green Infrastructure.

2024 EDUCATION SYMPOSIUM

Friday, April 26, 2024
Nicollet Island Pavilion | Minneapolis, MN



ASLA
MINNESOTA